

Step by Step Guide

Scanning Enabler™ ActiveX Control Guide

Contents

- ACTIVEX CONTROL1
- SAFETY AND SECURITY1
- AUTOMATIC DEPLOYMENT2
- MANUAL DEPLOYMENT3
- DOWNLOADING4
- MICROSOFT SMS9
- SUMMARY10

ActiveX Control

An ActiveX control is used to add functionality to HTML web pages running on Internet Explorer and Microsoft Windows. ActiveX is an established and well supported standard.

Safety and security

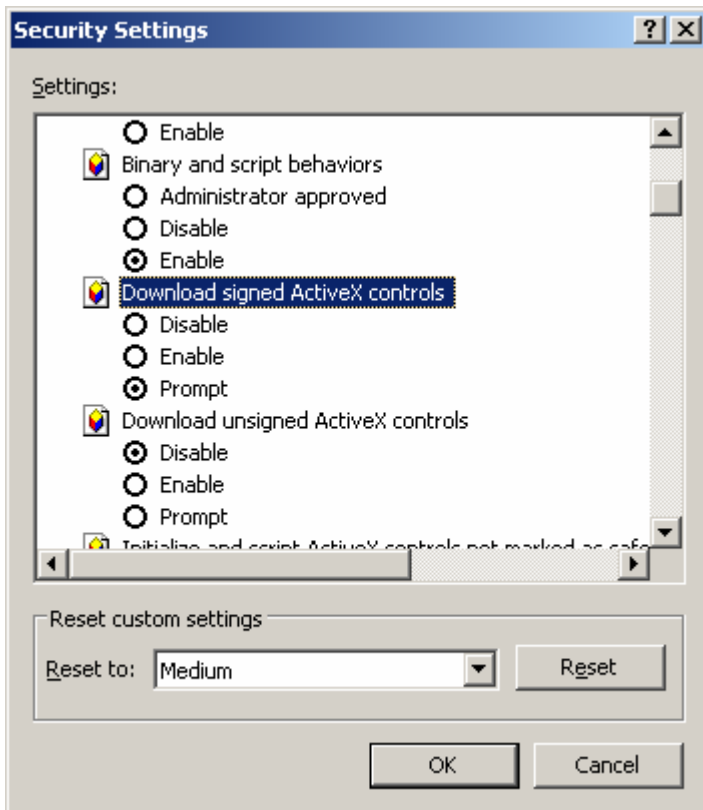
Internet Explorer can be configured to install ActiveX controls automatically. But setting Internet Explorer up to work in this way is dangerous. A user who configures Internet Explorer to automatically download all ActiveX controls from anywhere trusts the creators of all the code they encounter. In the age of malicious software (malware) this is not a wise thing to do.

As an alternative Internet Explorer can be configured to download and install ActiveX controls only from “trusted” web sites and only ActiveX controls that have been “digitally signed”. A company’s internal web servers are typically trusted (the company’s intranet) and commercial software companies will usually sign their ActiveX controls.

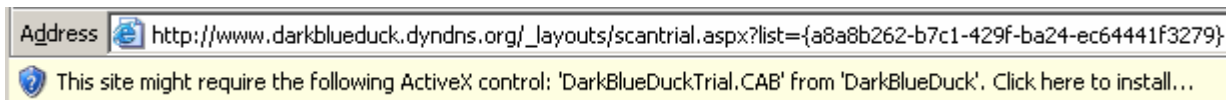
Finally Internet Explorer can be configured to never download ActiveX controls. In corporate environments where this configuration is used ActiveX controls are either deployed manually or using system management products such as Microsoft SMS.

Automatic Deployment

By default Internet Explorer 6 is configured to prompt the user before downloading and installing a signed ActiveX control from the Internet. Notice that by default unsigned ActiveX controls are not downloaded.

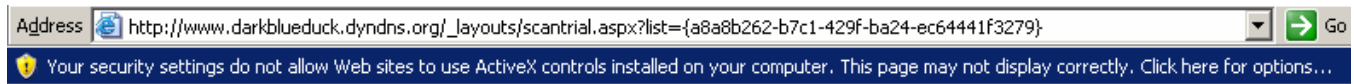


Internet Explorer will prompt the user before downloading and installing a Dark Blue Duck ActiveX control. If Internet Explorer is attempting to install the ActiveX control automatically the prompt it shows looks like this:

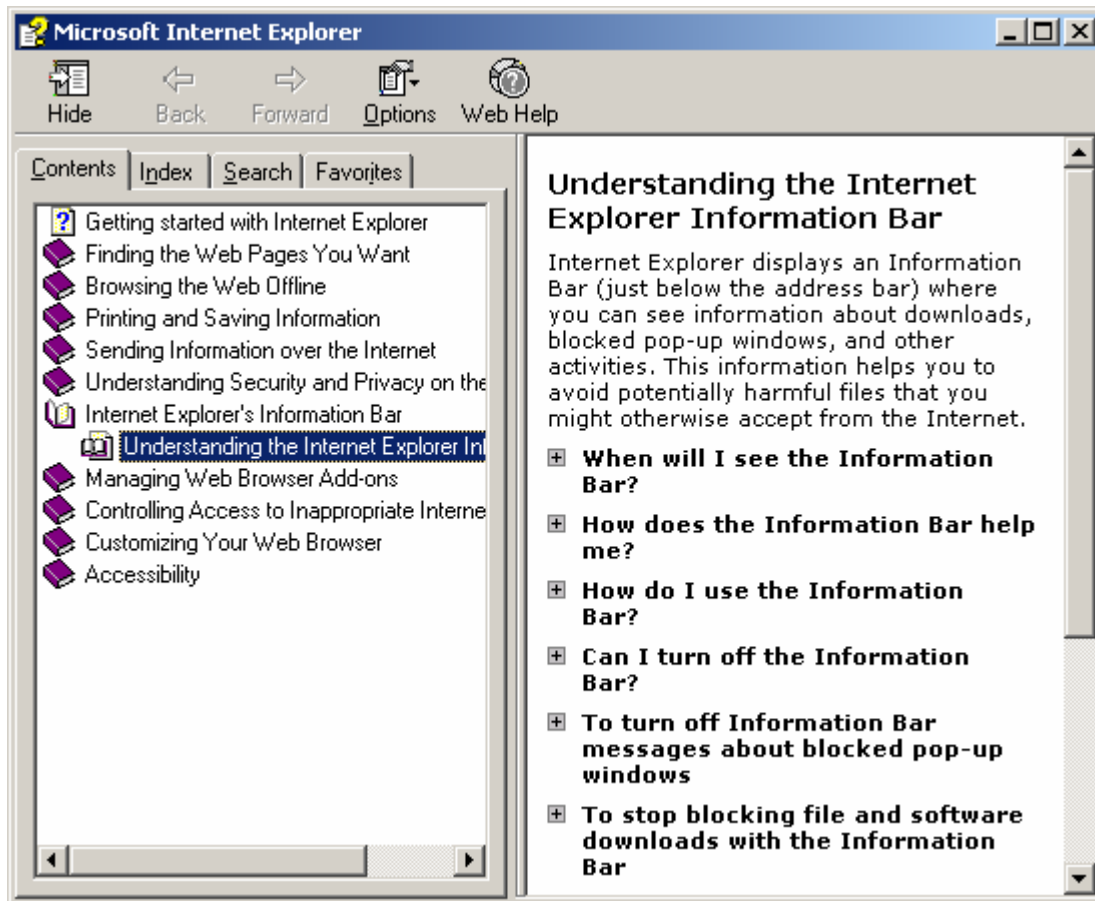


Manual Deployment

If Internet Explorer is configured so that it will not automatically download and install an ActiveX control you will see a prompt like this one.



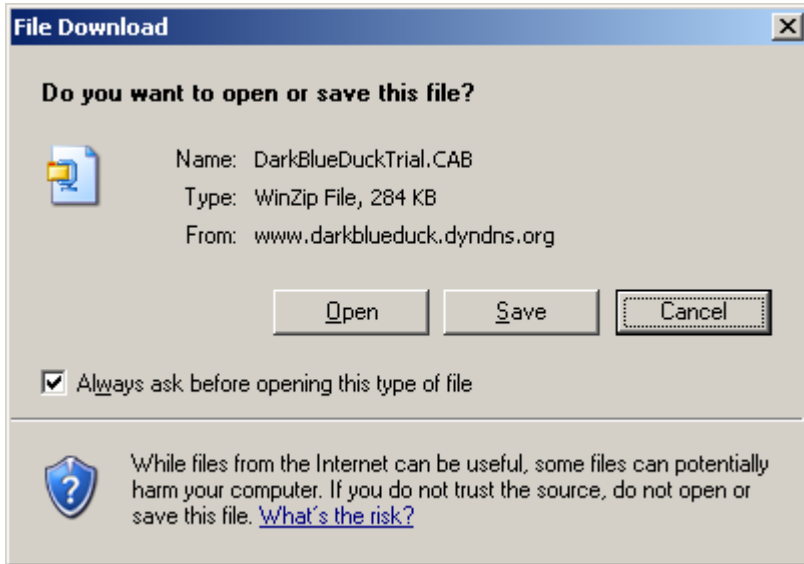
An explanation of what has happened is then provided.



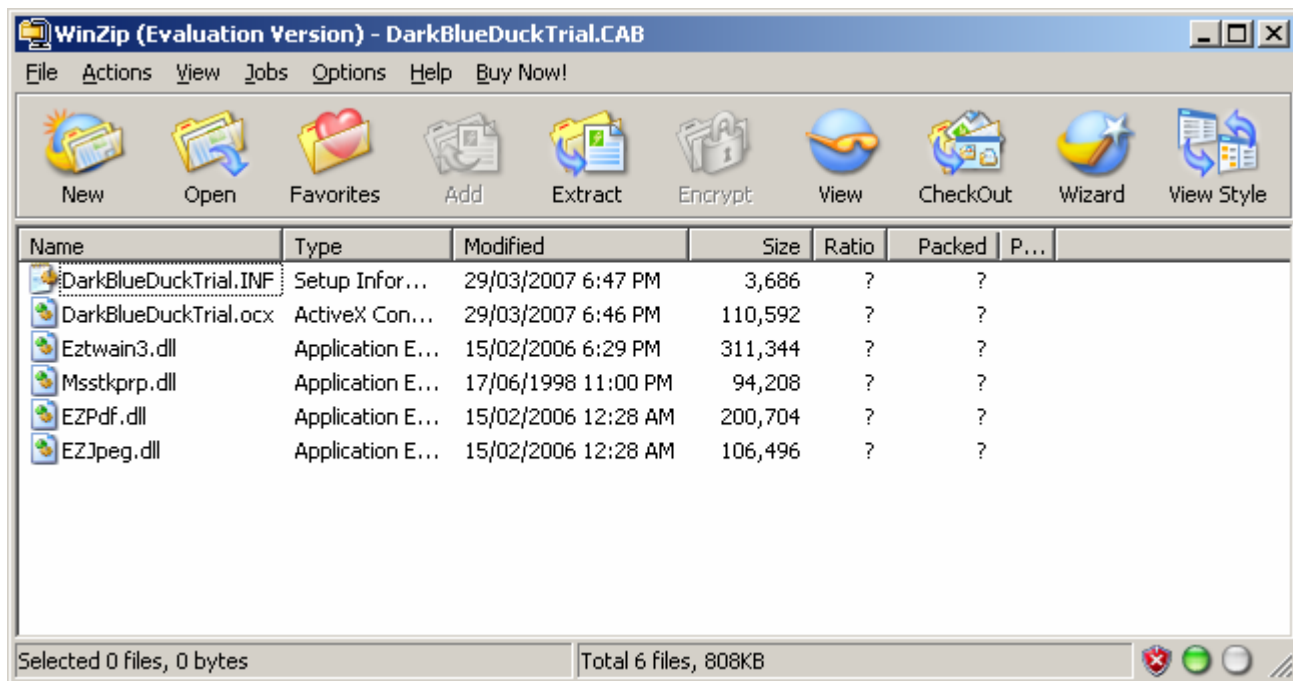
At this point you could either update your Internet Explorer settings or install the ActiveX control manually.

Downloading

To install the ActiveX control manually download and save the .CAB file locally. The .CAB file will have been added to the Windows SharePoint Services _layouts folder and you will be able to download it by navigating to http://<sharepoint server name>/_layouts/DarkBlueDuckTrial.CAB (or http://<sharepoint server name>/_layouts/DarkBlueDuckRetail.CAB).

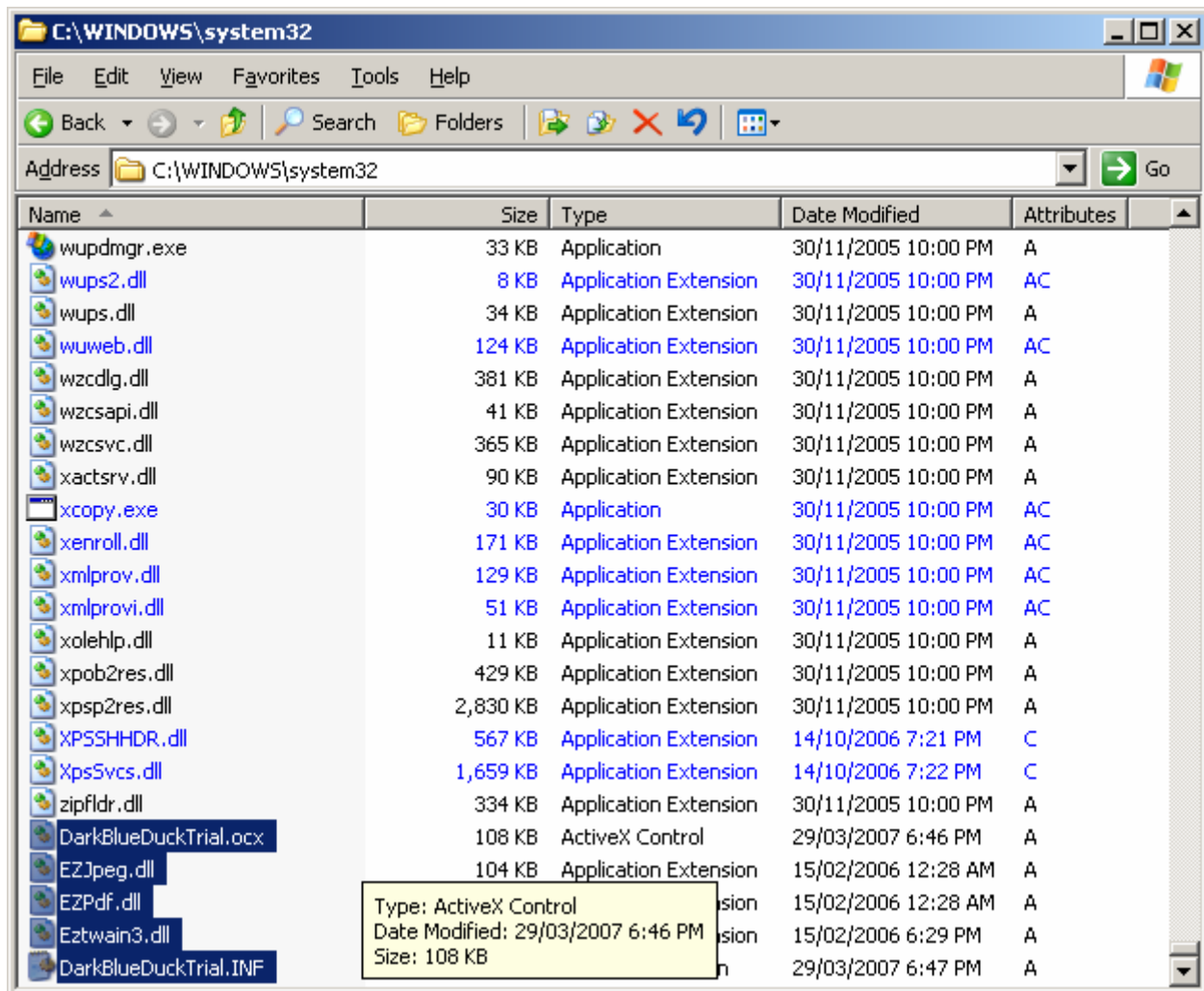


Next use WinZip (or another utility¹) to extract the contents of the .CAB file.

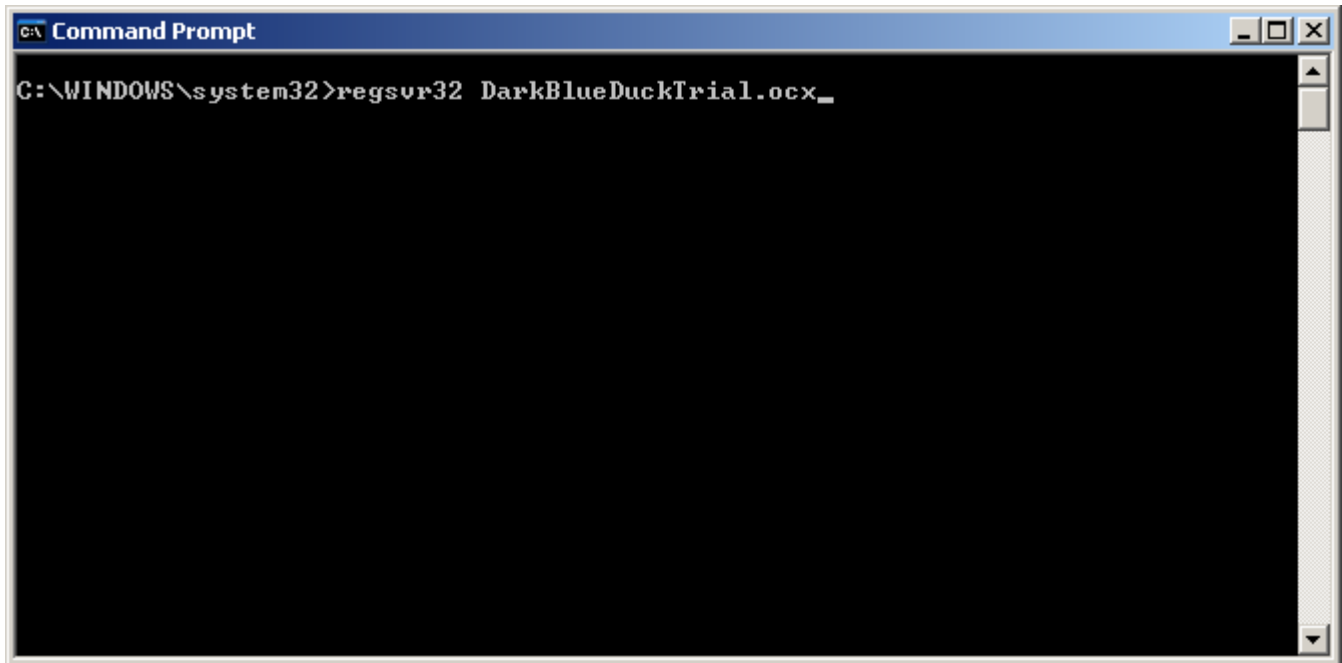


¹ <http://www.microsoft.com/resources/documentation/windows/xp/all/proddocs/en-us/expand.msp?mfr=true>

Once you have extracted the files from the .CAB file copy them to the windows system32 directory (c:\windows\system32 in most cases).



Now “register” the ActiveX control using “regsvr32”. This step adds details of the ActiveX control to the Windows Registry.



```
C:\> Command Prompt
C:\WINDOWS\system32>regsvr32 DarkBlueDuckTrial.ocx_
```

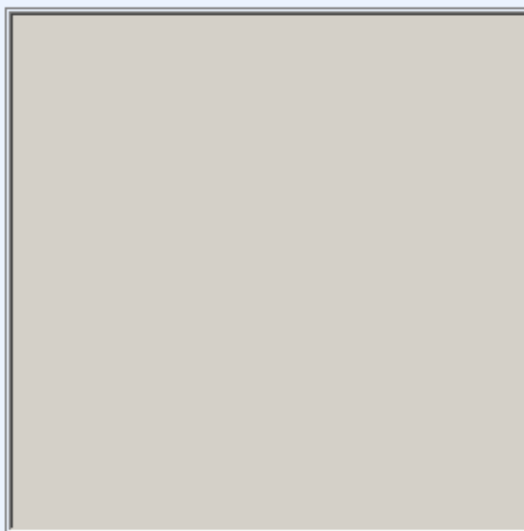
From this point the ActiveX control should work normally.

Scan Document: Shared Documents

Scan Document

Scan the document you intend to upload.

Pages:



Scan

Select Source

Rotate Page

Delete Page

Previous

Next

Microsoft SMS

For large corporate deployments of the Dark Blue Duck Scanning Enabler™ 2007 we recommend an automated deployment of the ActiveX files using software management software (such as Microsoft SMS).

Summary

Congratulations you have completed the Scanning Enabler™ 2007 ActiveX Control guide.

In this guide you learned how to:

-
- Install the Scanning Enabler ActiveX control
-