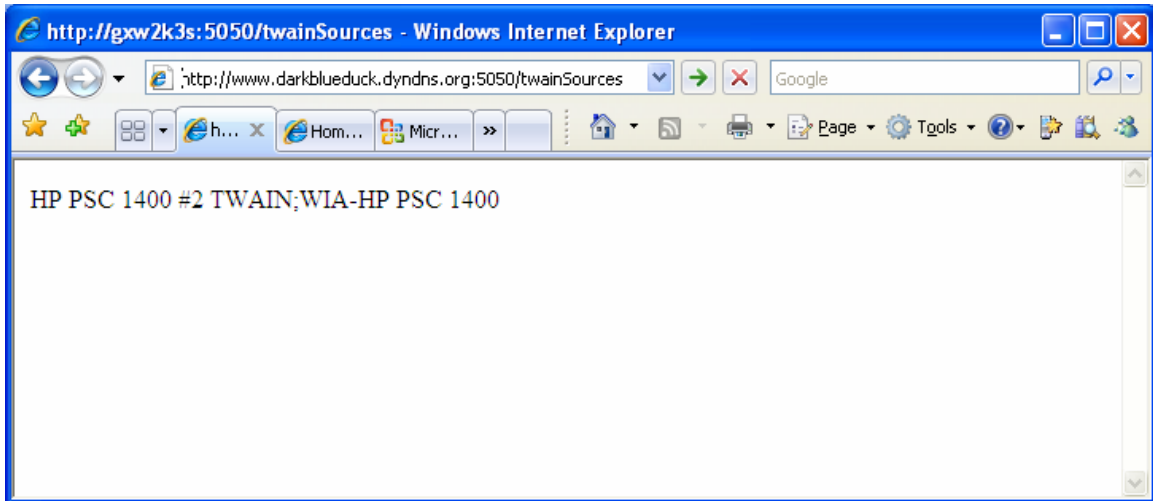
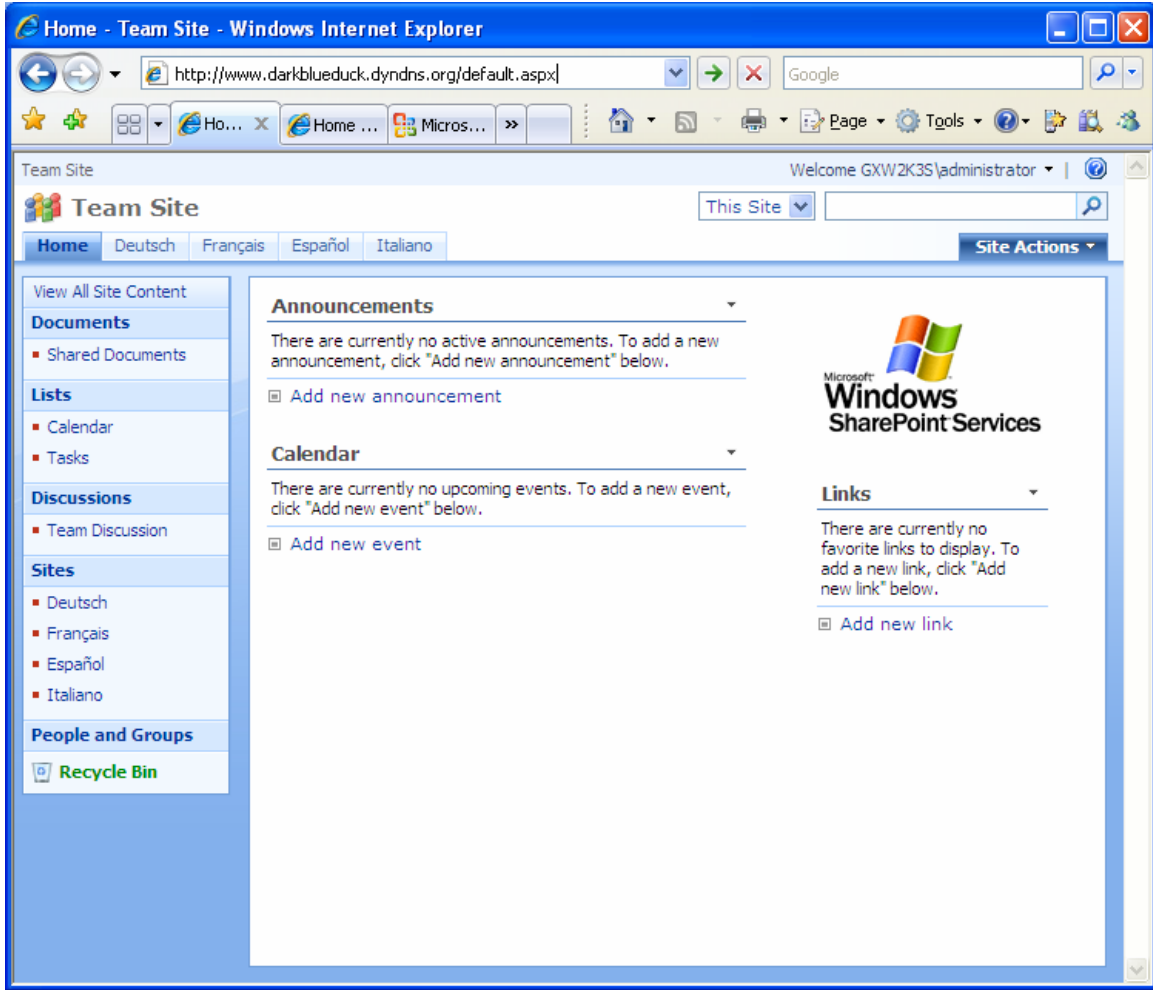


Does your local firewall block outgoing port 5050?

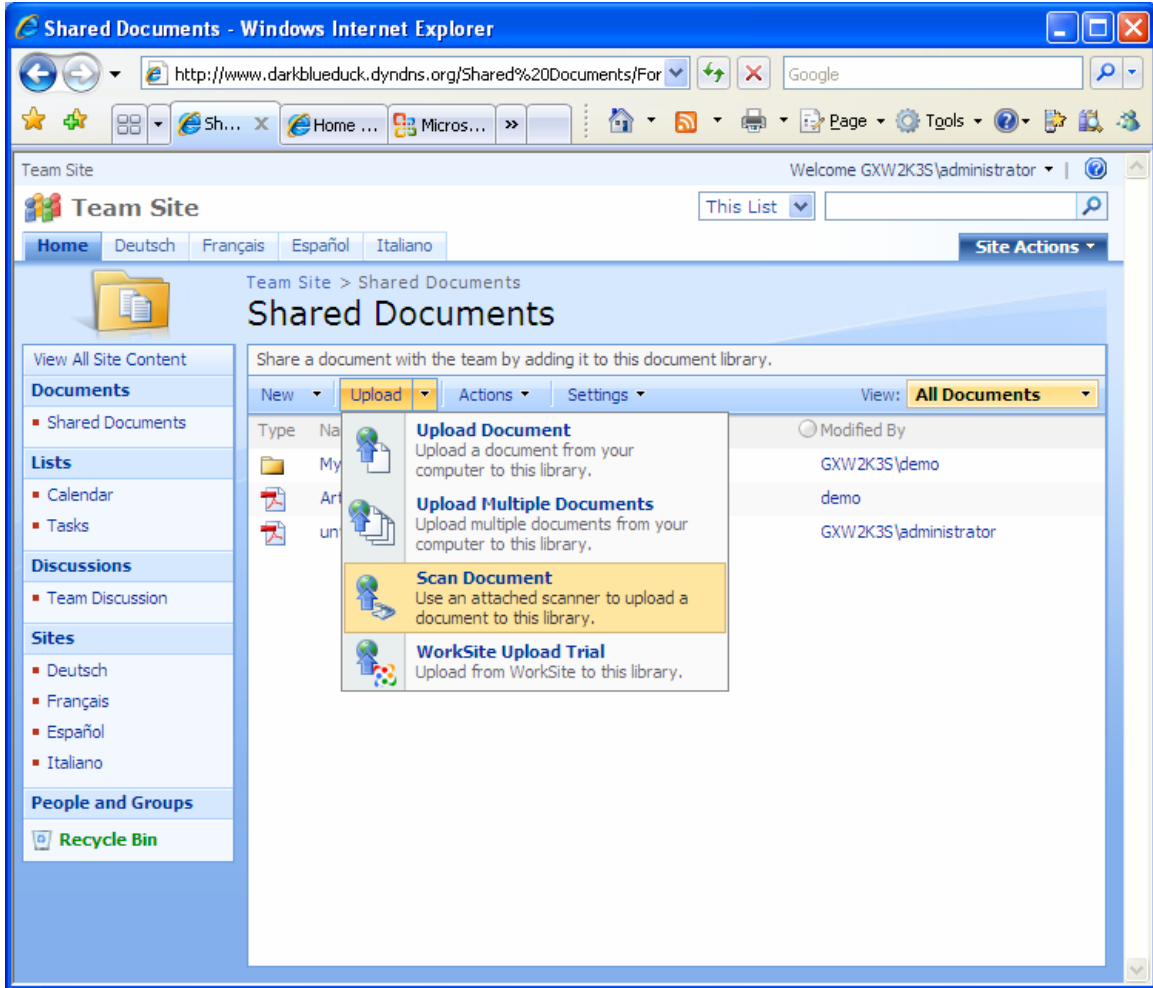
If you can navigate to <http://www.darkblueduck.dyndns.org:5050/twainSources> then you should be able to evaluate the Scanning Enabler without a local scanner.



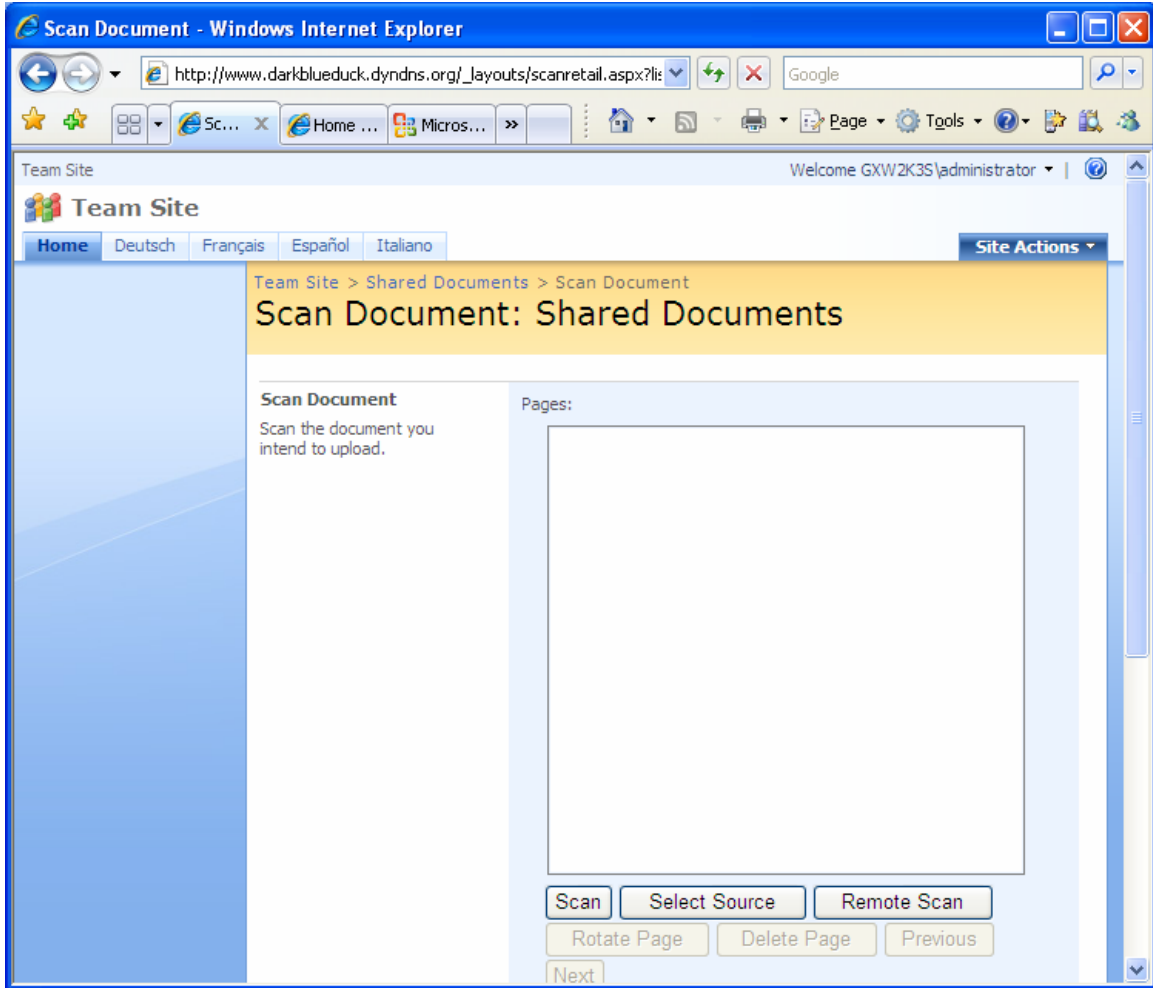
Navigate to the online tryout homepage.



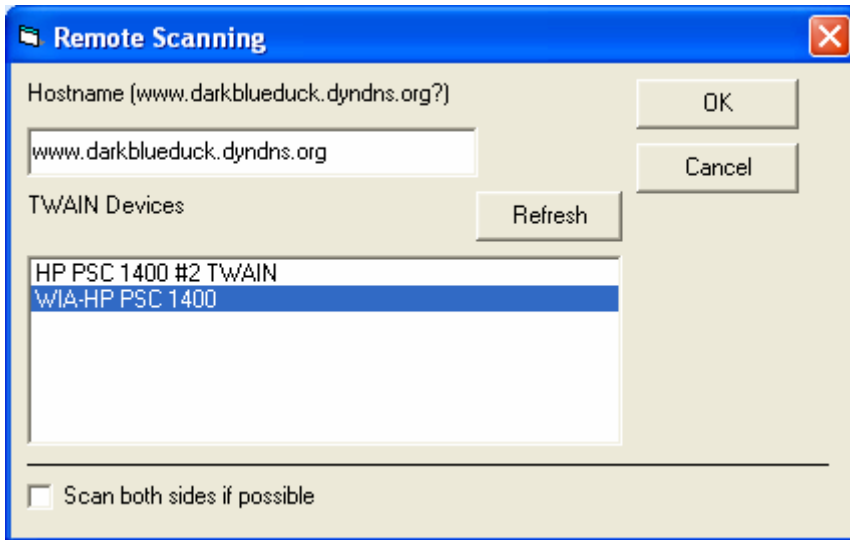
Navigate to the Shared Documents library and select the Scan Document option.



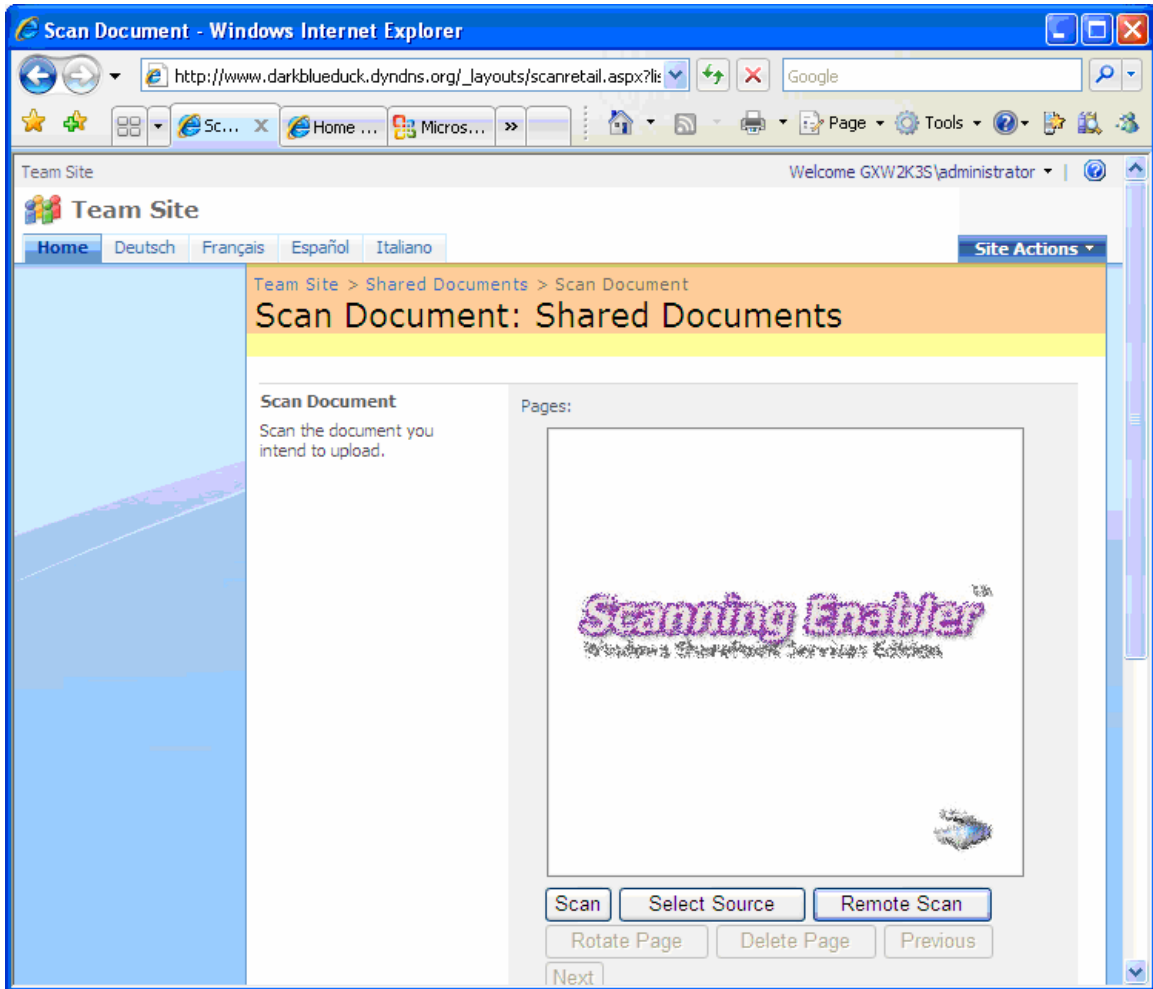
Click on the remote Scan button.



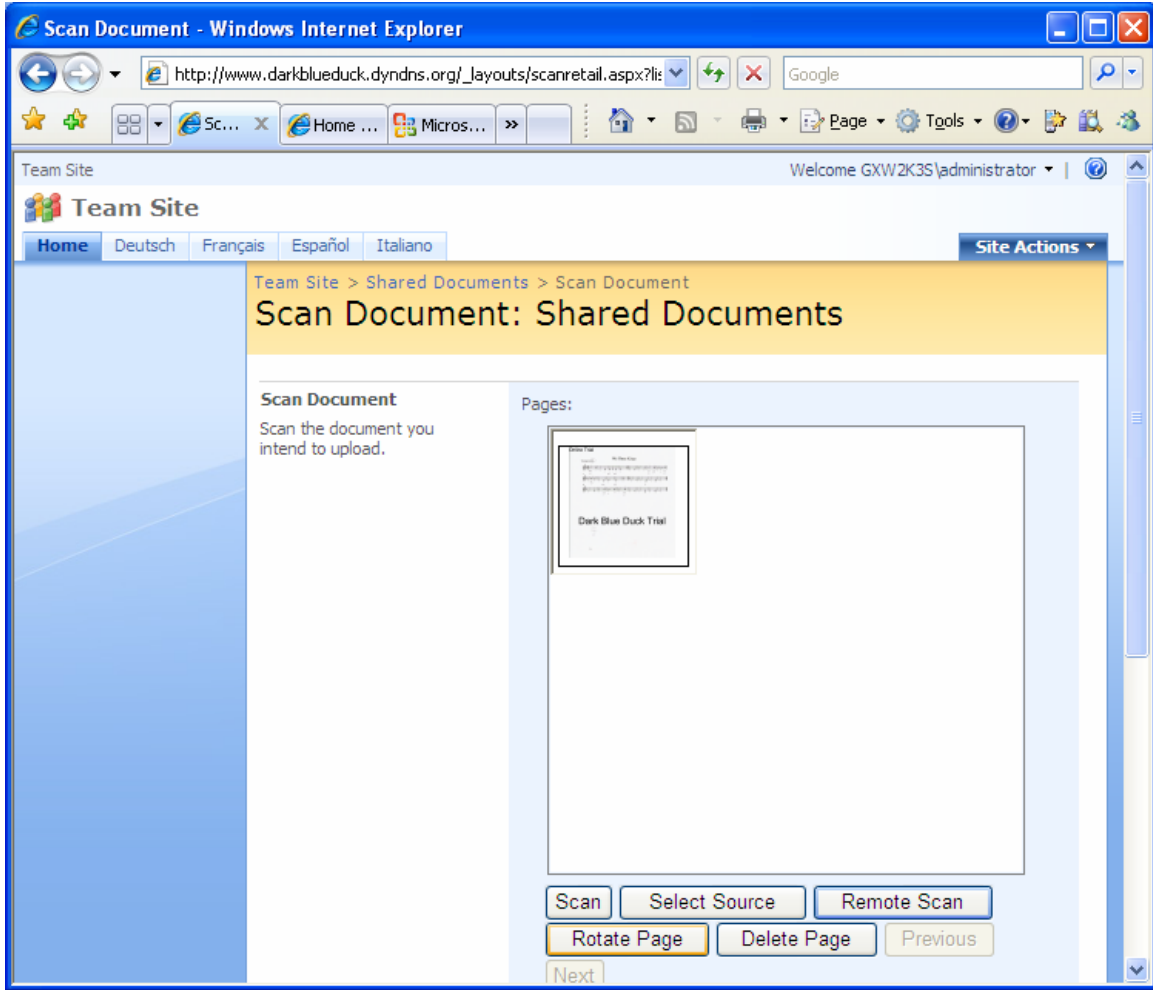
Enter the hostname of the remote computer (the computer running the Dark Blue Duck Scanner Sharing program). In this case the hostname is <http://www.darkblueduck.dyndns.org/> .



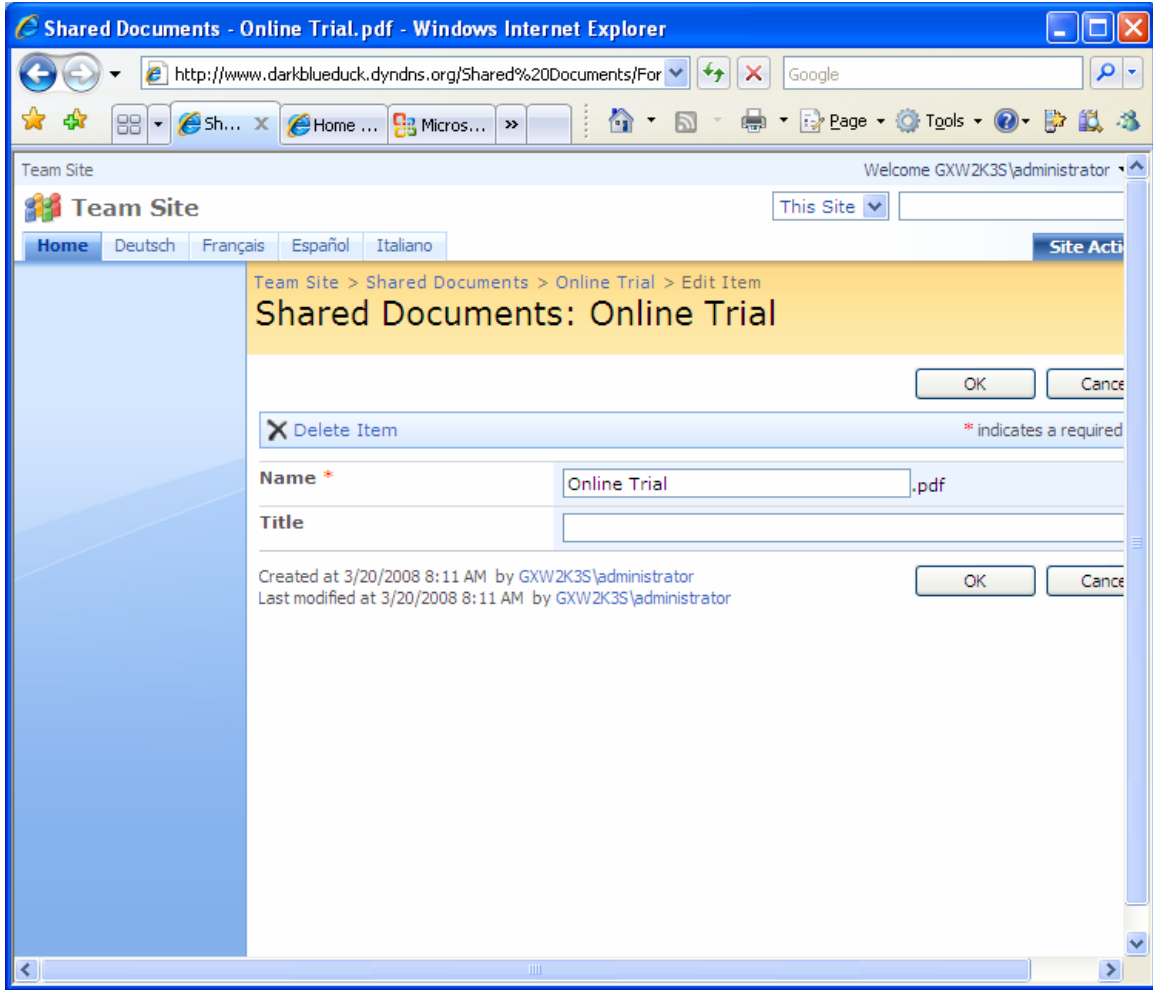
Wait for the scanner to scan in the page (note that we have attached an inexpensive HP PSC 1410 All-in-One scanner to our tryout server  
<http://h10010.www1.hp.com/wwpc/nz/en/ho/WF05a/1090037-1090149-7369181-7369181-1121957-12147288.html>).



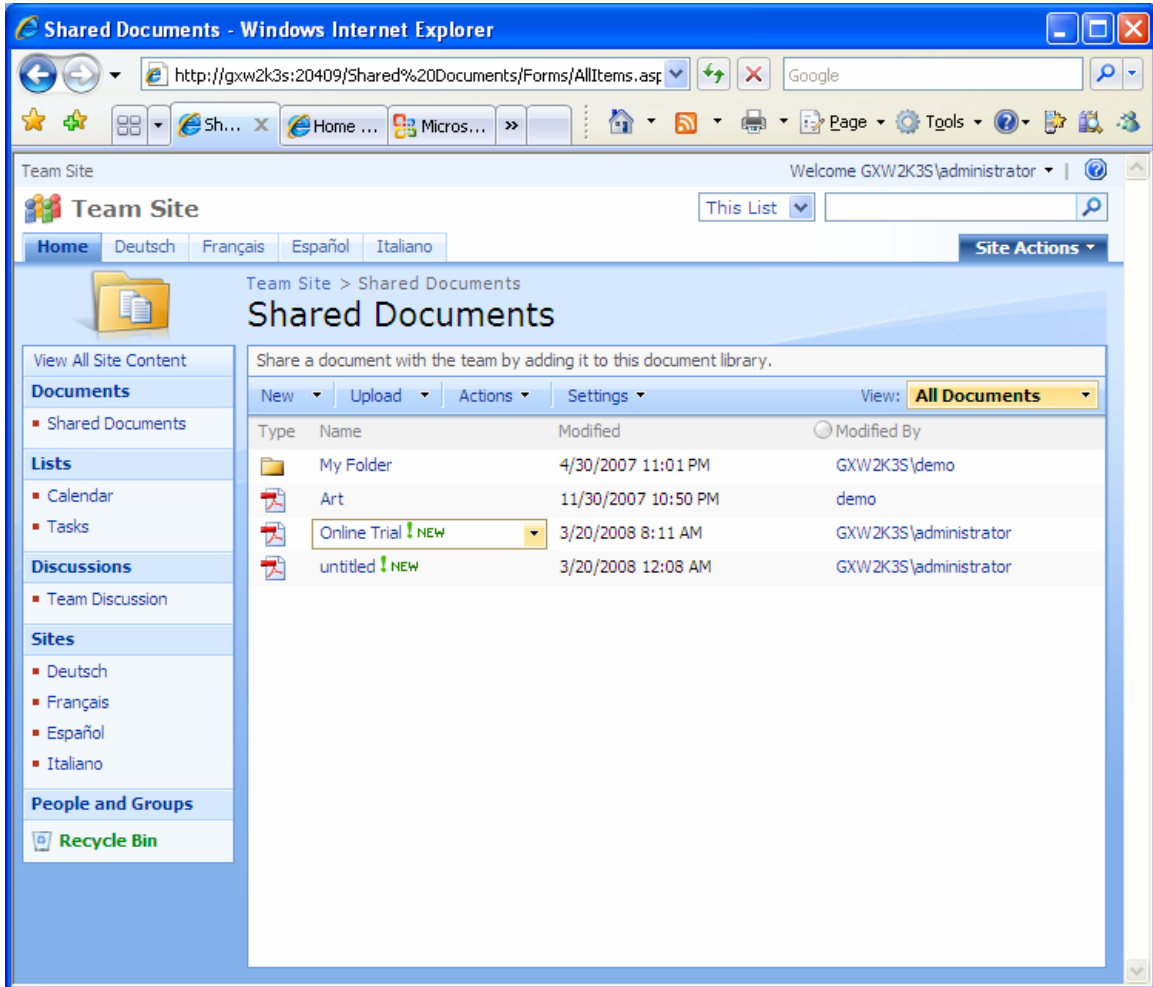
A result scanned page is returned



Click OK to save the new document to the SharePoint Document Library.



The new document has been uploaded to the SharePoint Document Library and will be added to the SharePoint search index.



The screenshot shows a Windows Internet Explorer browser window displaying a SharePoint document library. The address bar shows the URL: <http://gxw2k3s:20409/Shared%20Documents/Forms/AllItems.aspx>. The page title is "Shared Documents" and the user is logged in as "GXW2K3S\administrator".

The document library interface includes a navigation pane on the left with sections for "Documents", "Lists", "Discussions", "Sites", and "People and Groups". The main content area displays a table of documents with the following data:

Type	Name	Modified	Modified By
Folder	My Folder	4/30/2007 11:01 PM	GXW2K3S\demo
Document	Art	11/30/2007 10:50 PM	demo
Document	Online Trial <b>NEW</b>	3/20/2008 8:11 AM	GXW2K3S\administrator
Document	untitled <b>NEW</b>	3/20/2008 12:08 AM	GXW2K3S\administrator

This is the new document opened with the Adobe pdf reader software (hosted by Internet Explorer).

