

# Step by Step Guide

---

*Dark Blue Duck Scanning Enabler™ Scanner*

*Sharing*

# Contents

- INTRODUCTION .....1**
- Objectives.....1
- Installing the Scanner Sharing program.....2
- Running .....4
- Exiting the Scanner Sharing Program.....5
- Hiding the TWAIN driver’s user interface .....6
- Making use of a shared scanner .....7
- Uninstall.....10
  
- SUMMARY .....12**

## Introduction

The Dark Blue Duck Scanning Enabler™ Scanner Sharing program allows you to share your TWAIN scanners.

Scanner Sharing can be installed on a standard desktop machine or a shared scan station.

The machine running the Scanner Sharing program needs to have access to a scanner via a standard TWAIN driver. It will also need a network connection.

*This guide describes how to set up Dark Blue Duck Scanner Sharing.*

## Objectives

After reading through this guide, you will understand how to:

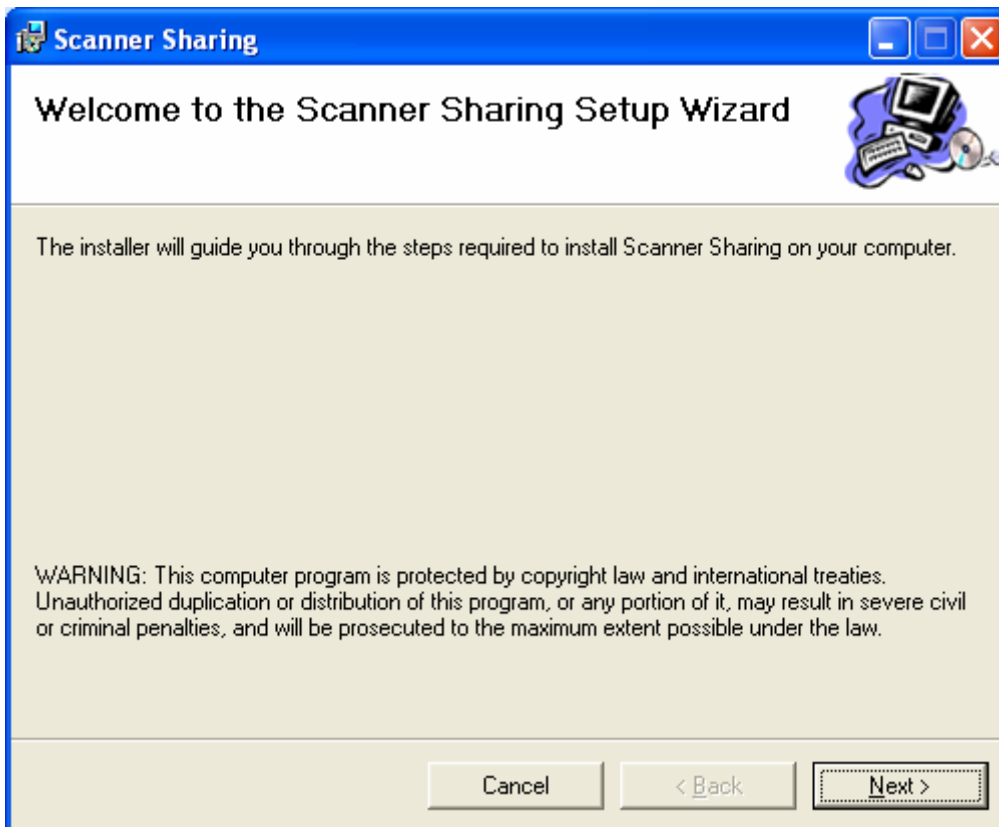
- Share a scanner; and
- Make use of a shared scanner.

## Installing the Scanner Sharing program

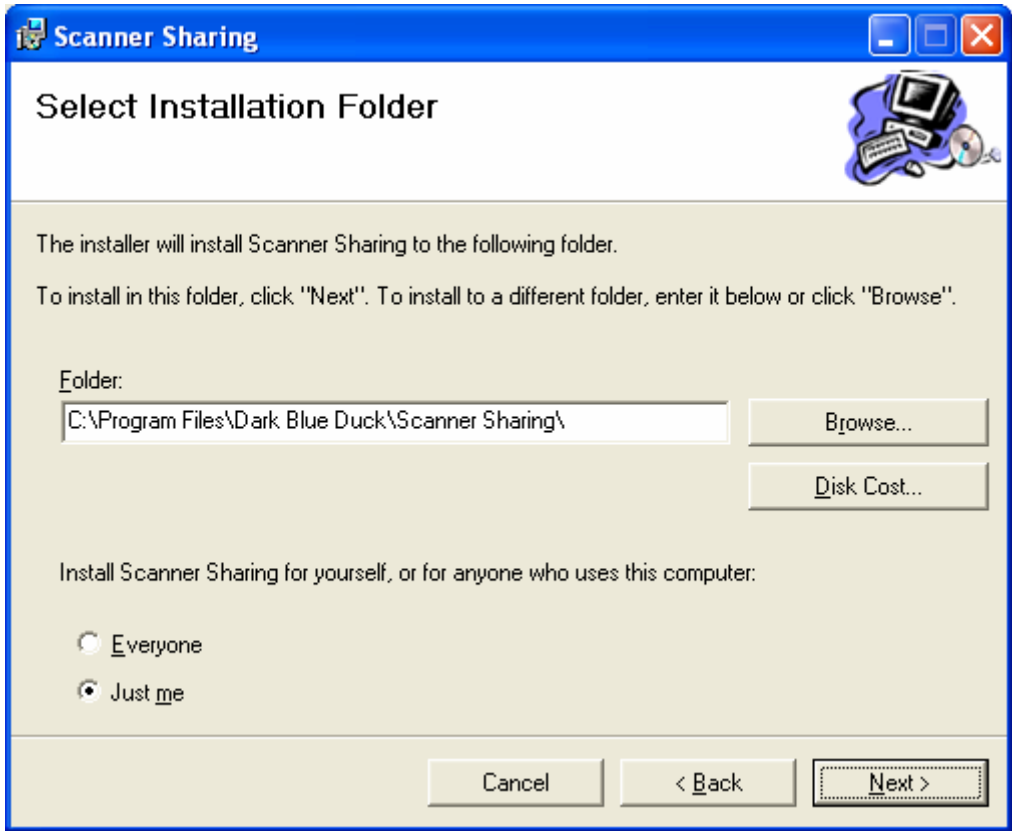
Click on the setup icon to install the Scanner Sharing program



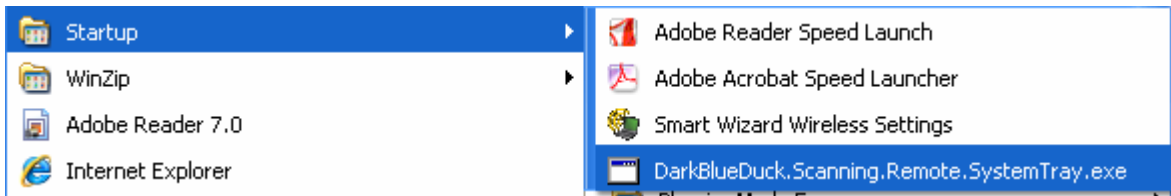
The program setup Wizard will be shown.



Select a location for the program



Notice that the Scanner Sharing program is added to the Startup group. This ensures that the program starts automatically.



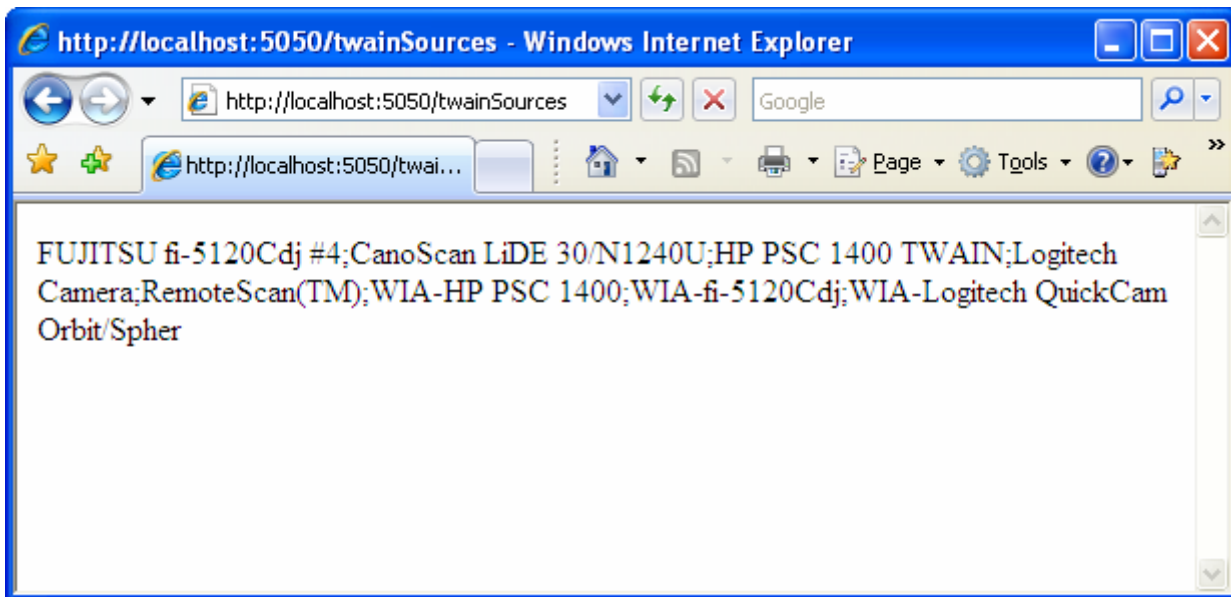
## Running

When the Scanner Sharing program starts you may be shown a Windows Security Alert.



Click the "Unblock" button to ensure that you do not see this message again.

Notice that it is possible to navigate to the Scanner Sharing program using an Internet browser.



# Exiting the Scanner Sharing Program

At runtime the Scanner Sharing Program appears as a taskbar icon



To close the application right click on the task pane icon and select the "Exit" menu option.



## Hiding the TWAIN driver's user interface

In theory it is possible to access a TWAIN device without showing any user interface.

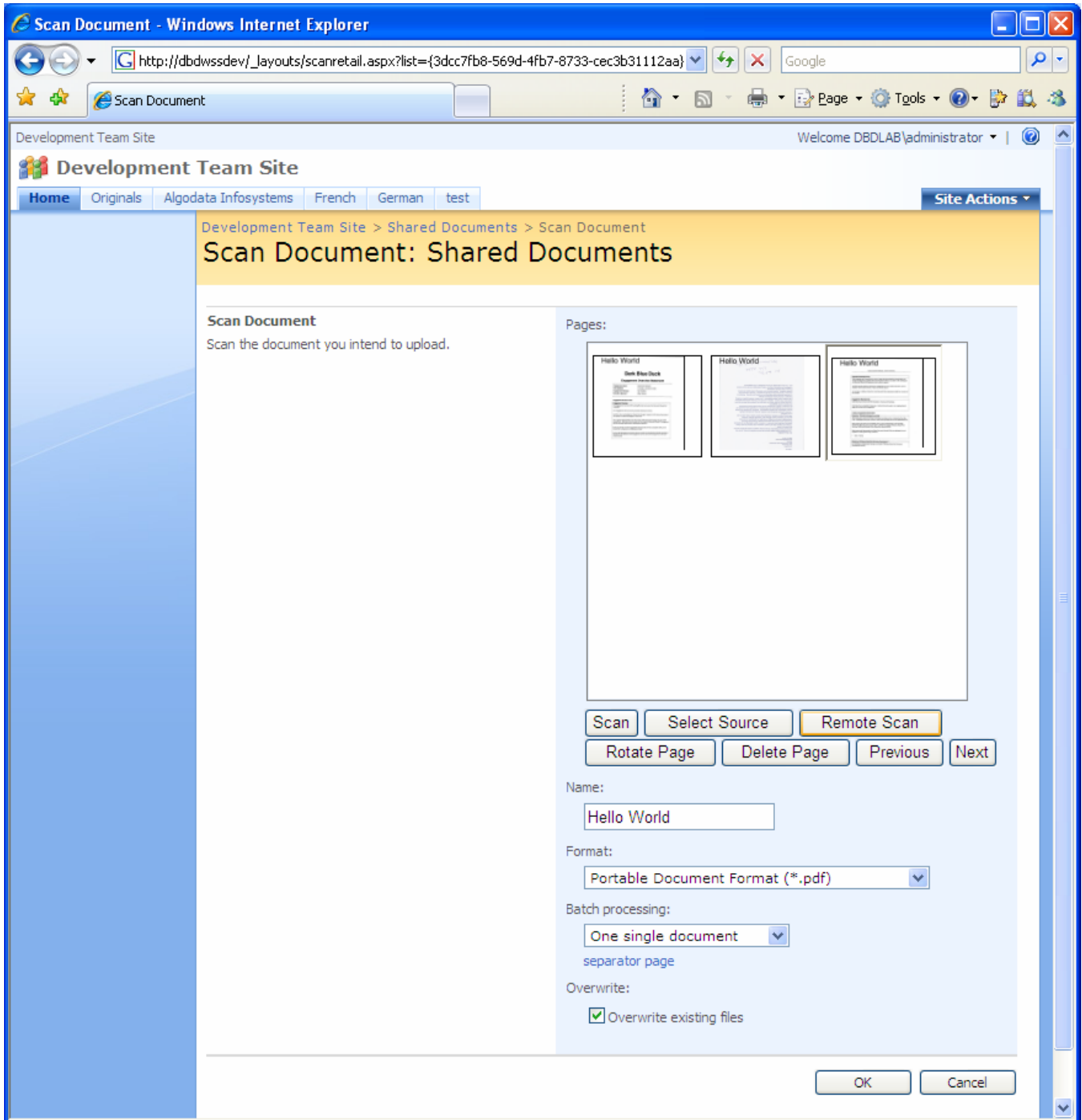
In practice many TWAIN drivers can not resist the temptation.

Fortunately the user running the Scanner Sharing application can safely ignore the vanity graphics.

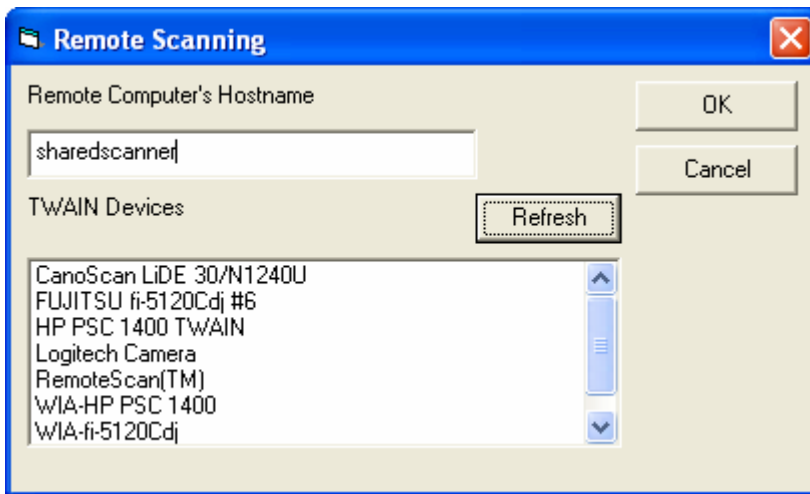


## Making use of a shared scanner

Click on the “Remote Scan” button to make use of a remote scanner. The remote scan button is a standard part of the Dark Blue Duck Scanning Enabler scanretail.aspx page.



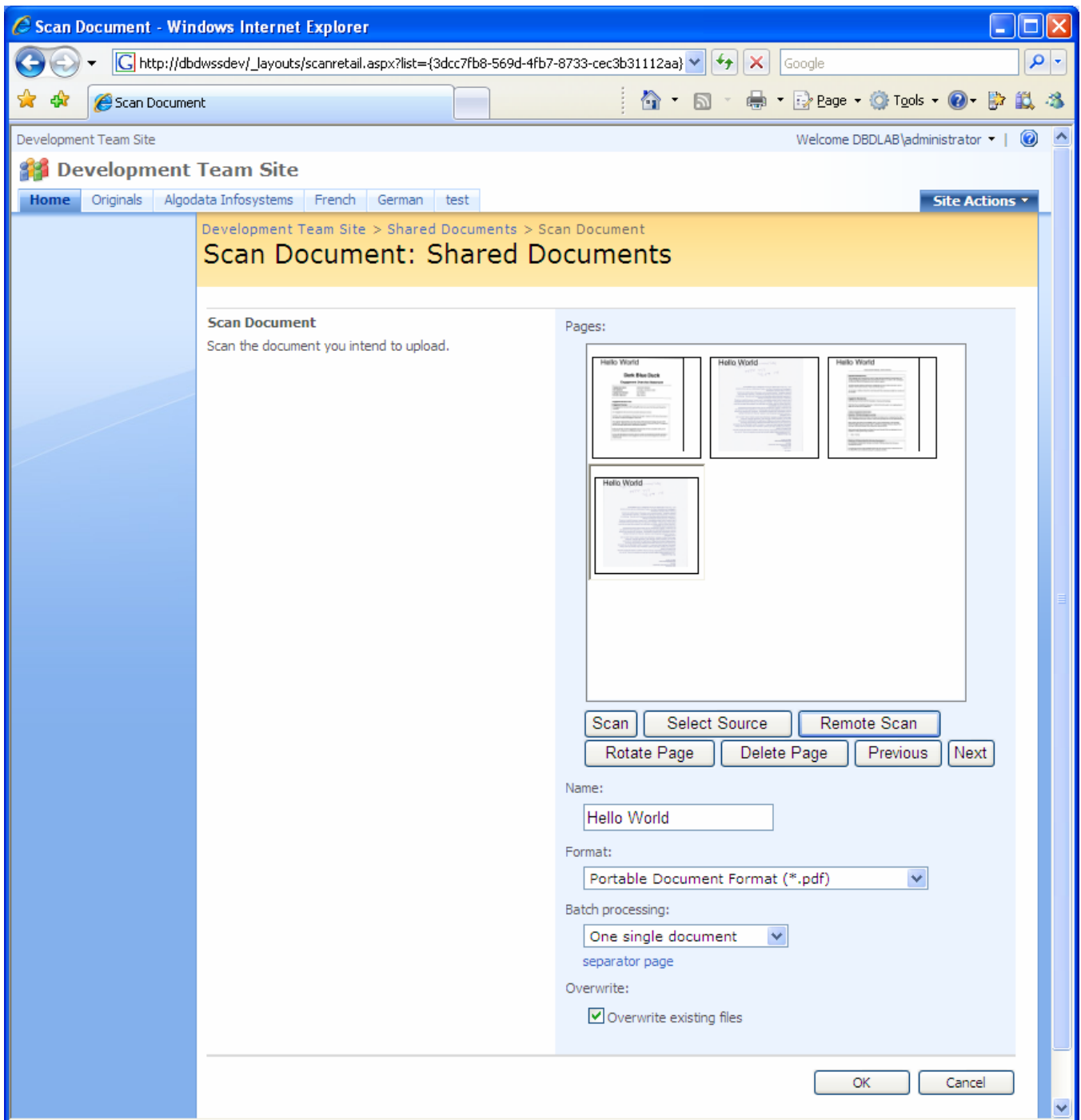
When you click the remote scan button a dialog is presented. In this dialog you will need to enter the name of the machine you would like to connect to.



Click the refresh button to retrieve a list of TWAIN devices connected to that machine.

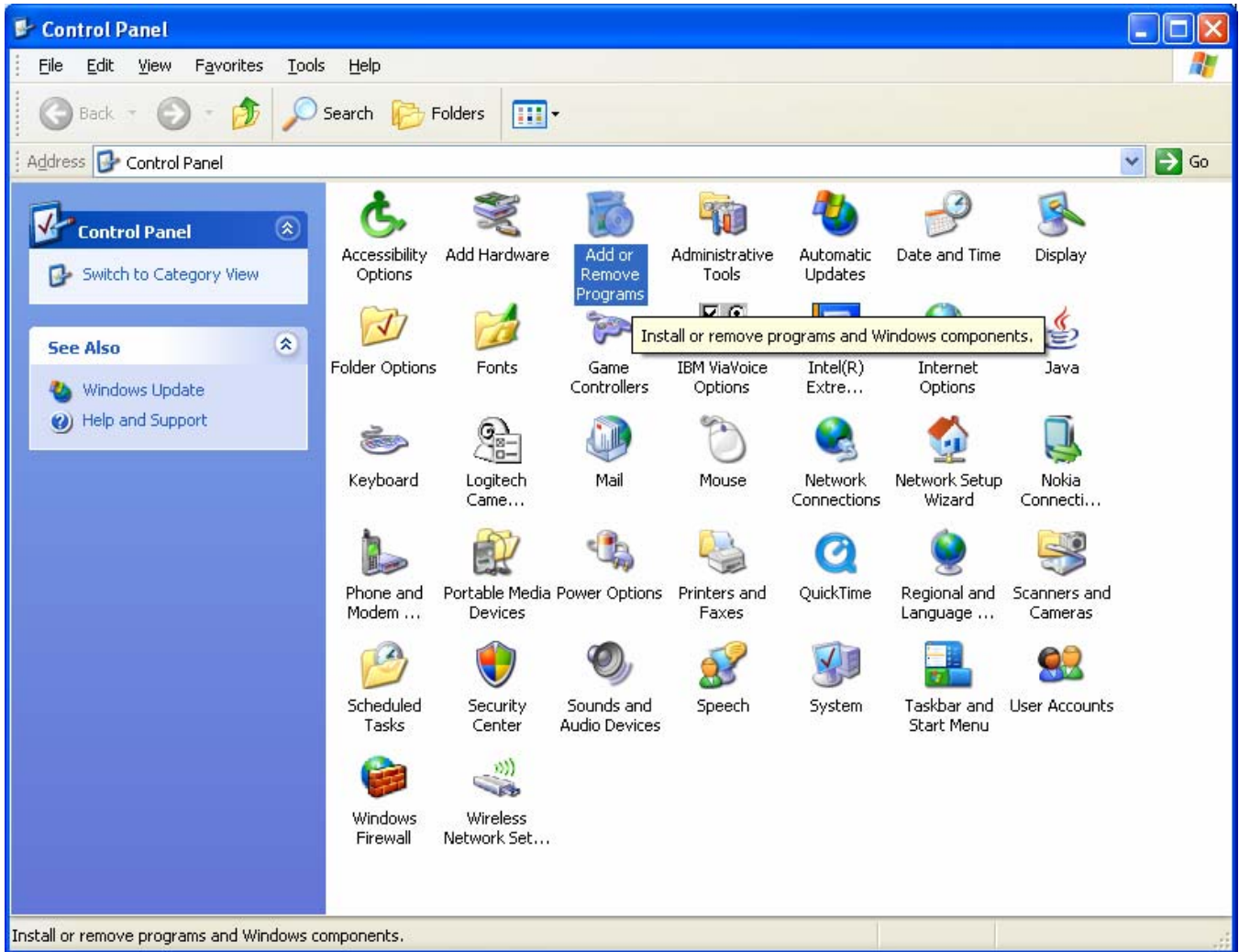
Click a device and click OK to select a scanning device.

The scanned page will be added to the scanretail.aspx pages collection in the normal manner

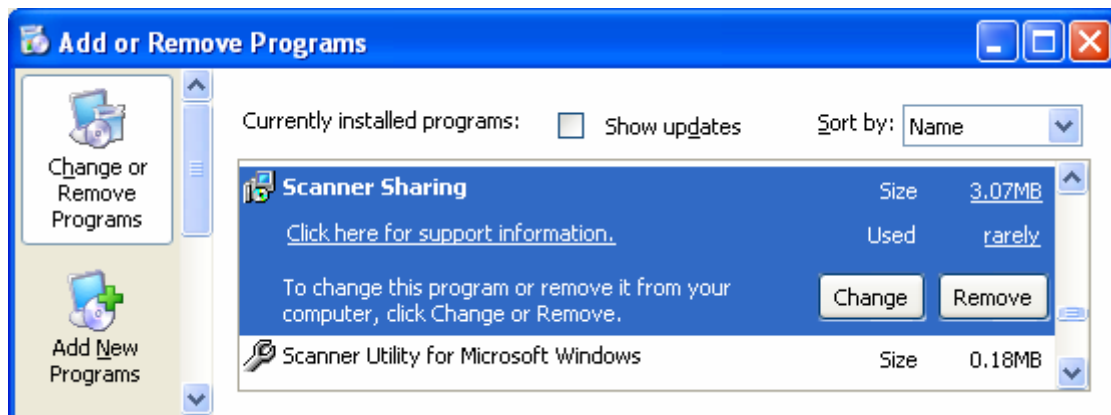


# Uninstall

To uninstall the Scanner Sharing program from a machine select the Add or Remove Programs item from the Control Panel.



Select "Scanner Sharing" and click remove.



## Summary

Congratulations you have completed this guide.

In this guide you learned how to:

- 
- Add and use the Dark Blue Duck Scanning Enabler™ Scanner Sharing program.
-